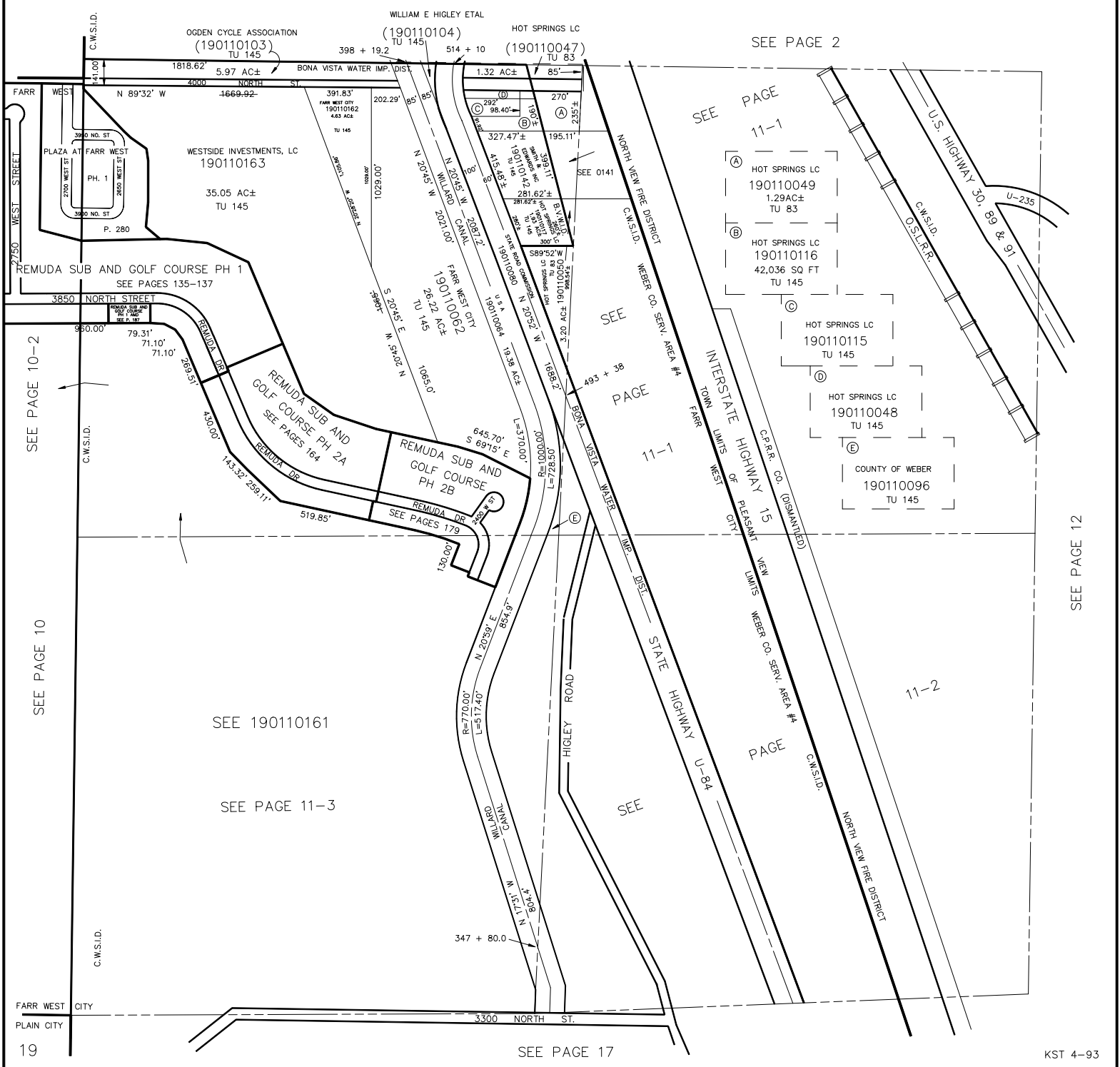


# SECTION 23, T.7N., R.2W., S.L.B. & M.

TOWN OF PLEASANT VIEW & FARR WEST CITY

TAXING UNITS: 83, 145

SCALE 1" = 400'



SEE PAGE 2

SEE PAGE 11-1

(A) HOT SPRINGS LC  
190110049  
1.29AC±  
TU 83

(B) HOT SPRINGS LC  
190110116  
42,036 SQ FT  
TU 145

(C) HOT SPRINGS LC  
190110115  
TU 145

(D) HOT SPRINGS LC  
190110048  
TU 145

(E) COUNTY OF WEBER  
190110096  
TU 145

SEE PAGE 10-2

SEE PAGE 10

SEE 190110161

SEE PAGE 11-3

SEE PAGE 11-1

SEE PAGE 11-1

SEE PAGE 17

SEE PAGE 12